



RT ENVIRONMENTAL SERVICES, INC.

Your Solution-Oriented Environmental Services Firm



Press Release



Stormwater Management: An Innovative Look at LID and BMPs

April 7, 2011 - Harrisburg, PA

Directory

Corporate Headquarters

215 West Church Road
King of Prussia, PA 19406
Phone: (610) 265-1510
FAX: (610) 265-0687
E-mail: RTENV@AOL.COM
World Wide Web:
[HTTP://RTENV.COM](http://RTENV.COM)

24 HOUR

URGENT LINE SERVICE

800-725-0593

Gary Brown, P.E., President

Phone: (610) 768-0232

E-mail:

GBROWN@RTENV.COM

Walter Hungarter

Phone: (610) 265-1510

Ext. 238

General Manager

E-mail:

WHUNGARTER@RTENV.COM

New Jersey

Glennon C. Graham, Jr.,
P.G.

Phone: (856) 467-2276

Ext. 122

E-mail:

GGRAHAM@RTENV.COM

Suite 306, Pureland
Complex

510 Heron Drive, P.O. Box
521

Bridgeport, NJ 08014

Agenda will include:

- Examine stormwater infiltration practices and problems.
- Review the Pennsylvania Chapter 102 revisions adopted in November 2010.
- Learn techniques for preventing and repairing erosion.
- Look at special management areas such as Karst, mined lands, and special protection waters.
- Discuss manufactured proprietary best management practices (BMPs).

Earn continuing education credit!

The seminar is planned to qualify you for up to 6.0 continuing education hours for architects, landscape architects, professional engineers and contractors.

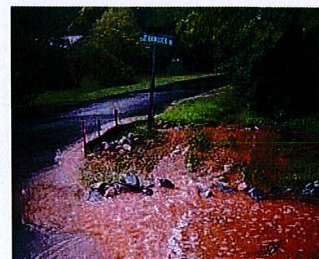
[Click here to view full agenda](#)



Gary Brown will present on:

Special Management Areas:

- Brownfields, special protection waters
- Urban areas, highways, and roads
- Karst areas
- Mined lands



3/9/2011

Phone: (856) 467-2276
FAX: (856) 467-3476

Southwest Pennsylvania

Justin Lauterbach

E-mail:

JLAUTERBACH@RTENV.COM

591 East Maiden Street

Washington, PA 15301

Phone: (724) 206-0348

FAX: (724) 206-0380

News from RT Environmental Services, I...

Thursday, April 7, 2011

8:30 am - 4:15 pm

Registration begins 30 minutes prior to seminar.

Location Information:

This event will be held at the

Harrisburg East Holiday Inn

4751 Lindle Road

Harrisburg, Pennsylvania 17111

- [Register online](#) at
www.halfmoonseminars.com
- [Click here](#) to download brochure

Forward email



This email was sent to rwilliams@rtenv.com by rwilliams@rtenv.com |
[Update Profile/Email Address](#) | Instant removal with [SafeUnsubscribe™](#) | [Privacy Policy](#).

RT Environmental Services, Inc. | 215 W. Church Road | King of Prussia | PA | 19406